

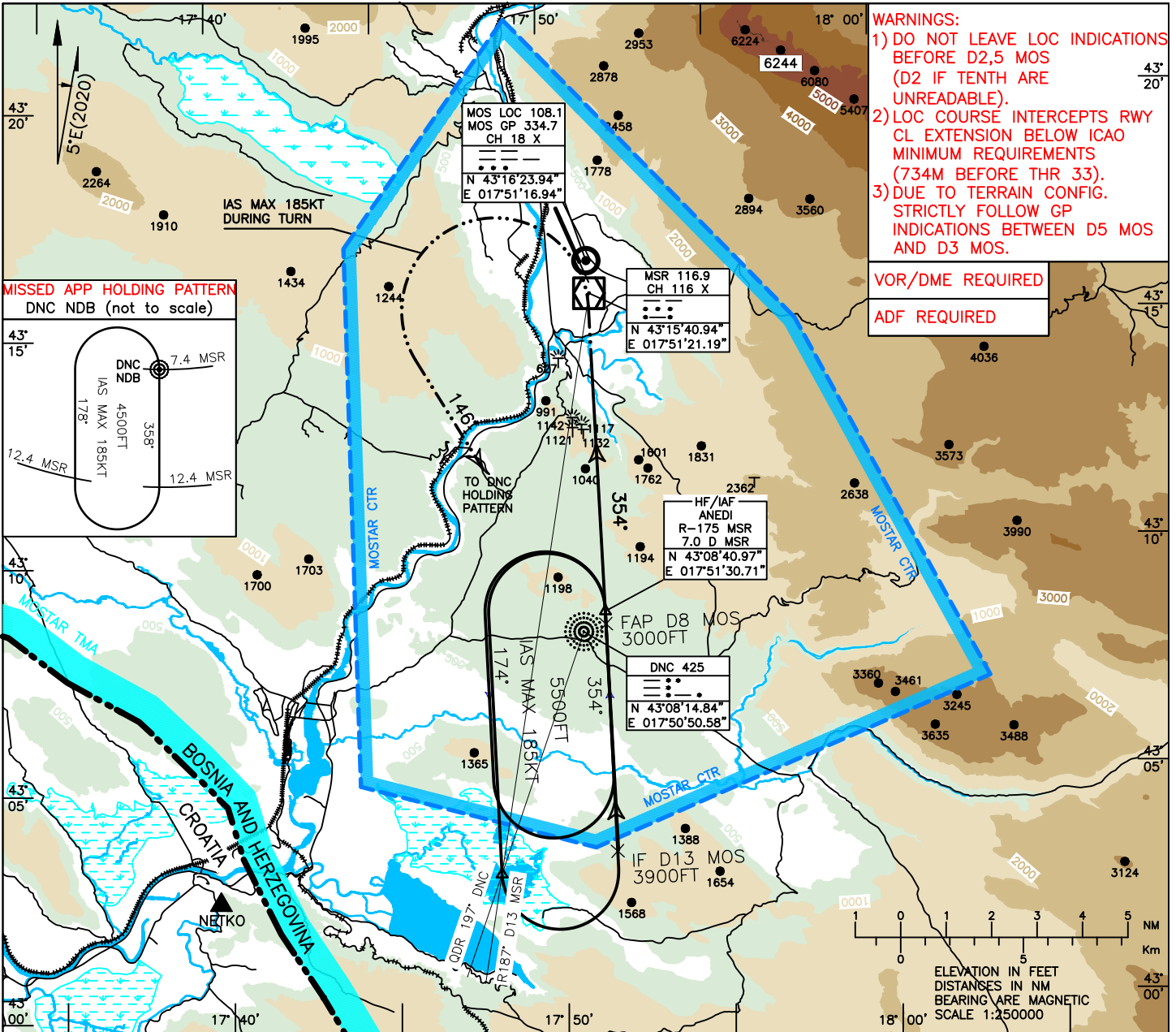
INSTRUMENT APPROACH CHART-ICAO

AD ELEV 174FT
HEIGHTS RELATED TO
FICT. THR ELEV 154FT

TRANSITION ALTITUDE
10 000FT
VAR 5°E(2020)

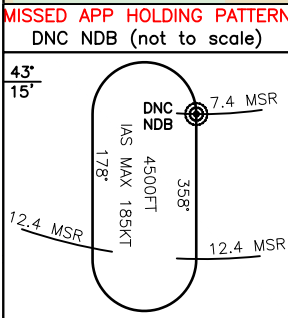
APP 120.225
129.875
TWR 125.550
ATIS 126.225

MOSTAR (LQMO) IGS-Z RWY33 SPECIAL PROCEDURE



- WARNINGS:**
- DO NOT LEAVE LOC INDICATIONS BEFORE D2,5 MOS (D2 IF TENTH ARE UNREADABLE).
 - LOC COURSE INTERCEPTS RWY CL EXTENSION BELOW ICAO MINIMUM REQUIREMENTS (734M BEFORE THR 33).
 - DUE TO TERRAIN CONFIG. STRICTLY FOLLOW GP INDICATIONS BETWEEN D5 MOS AND D3 MOS.

VOR/DME REQUIRED
ADF REQUIRED



GP: 3,4°
41SSD APPROACH:
MAINTAIN TRACK 354° CLIMBING TO 4500FT.
AT D1 MOS DME TURN LEFT TO QDR 326°
(TRACK 146°) DNC NDB TO ENTER
DNC HOLDING PATTERN AT 4500FT.
IAS MAX 185KT DURING TURN.

FOR A NEW APPROACH SEE REMARKS (**)
ELEVATIONS REFERRED TO FICT THR

MOS ILS (DME) ← (NM) FICT THR ELEV 154 MOS ILS (DME)
MSR VOR/DME ← (NM) MSR VOR/DME

* TO DNC HOLDING PATTERN AT 4500FT
TP D1 MOS TO QDR 326° (TRACK 146°) DNC NDB

ATC DISCRETION
HOLDING 1' 5500FT
IAS MAX 185KT
RACETRACK 1,5'
IAS MAX 185KT
IF (3900FT) D13 MOS

TERRAIN PROFILE

CAT.	IGS RWY 33 OCA (H)		GS	FT MIN	MOS	DME	ALT (HGT)	REMARKS:	MSA 25NM MSR VOR/DME
	MACG 2,5%	MACG 4%							
A	1961 (1807)	1279 (1125)	120	722	4	1598(1444)	130	1) MOS LOC/GP/DME EQUIPMENTS ARE CO-LOCATED ABOUT 270M EAST FROM THR 33. 2) LOC COURSE OFFSET 21° (OUTSIDE ICAO REQUIREMENTS). 3) RWY 33 QFU/GEO: 333°/338°. ** ENTERING ON INBOUND LEG OF DNC NDB HOLDING PATTERN RE-CAPTURE LOC COURSE AS SOON AS POSSIBLE AND DESCEND TO 3000FT BEFORE D8 MOS THEN FOLLOW NOMINAL FINAL APPROACH TRACK FOR LANDING. ATC CLEARANCE NEEDED.	
B	1971 (1817)	1289 (1135)	130	782	3	1237(1083)	140		
C	1984 (1830)	1302 (1148)	140	842	2	876(722)	150		
			150	903	1	515(361)	160		
			160	963	0	154(0)			

CHG: MSA UPDATED;

THIS PAGE INENTIONALY LEFT BLANK